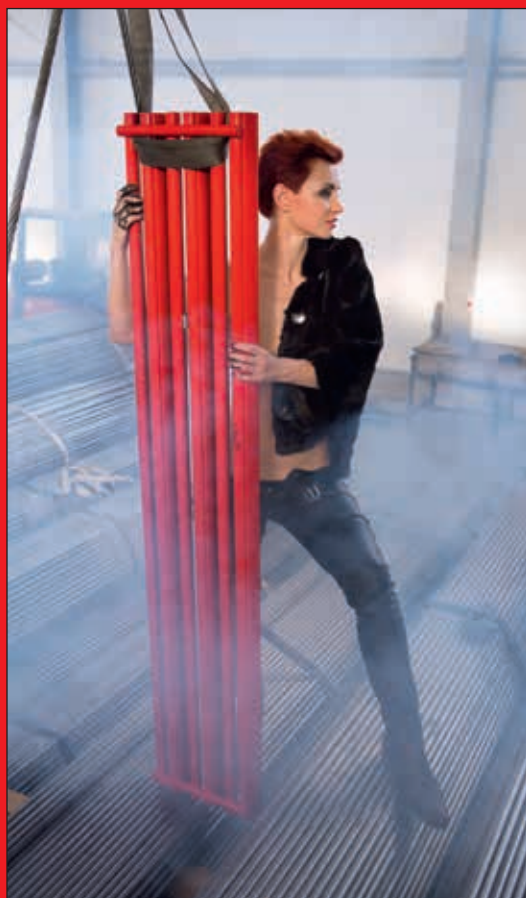
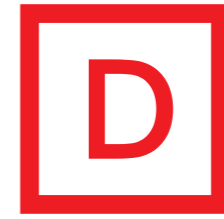
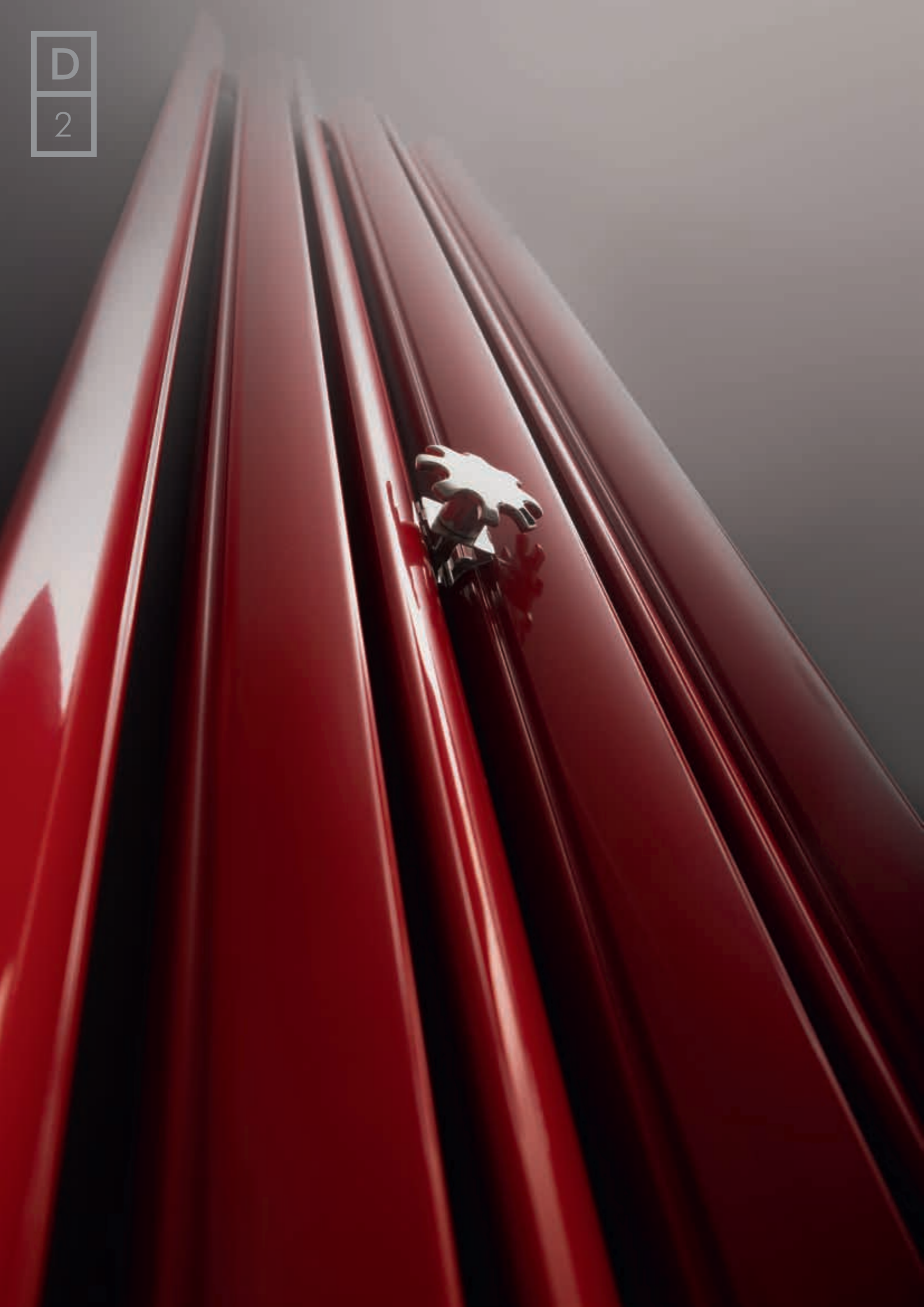




2 0 1 3 / 2 0 1 4



2-23		GRZEJNIKI DESIGN DESIGNER RADIATORS DESIGNHEIZKÖRPER ДИЗАЙН РАДИАТОРЫ
24-37		GRZEJNIKI DEKORACYJNE DECORATIVE RADIATORS DEKORATIVHEIZKÖRPER ДЕКОРАТИВНЫЕ РАДИАТОРЫ
38-45		GRZEJNIKI ŁAZIENKOWE CHROMOWANE CHROME TOWEL WARMERS VERCHROMTE BADHEIZKÖRPER ХРОМИРОВАННЫЕ РАДИАТОРЫ
46-49		GRZEJNIKI DRABINKOWE TRADITIONAL RADIATORS STANDARD - BADHEIZKÖRPER РАДИАТОРЫ ЛЕСИНКА
50-53		GRZEJNIKI ELEKTRYCZNE, GRZAŁKI DO GRZEJNIKÓW ELECTRIC TOWEL WARMERS, HEATERS ELEKTRO - BADHEIZKÖRPER, ELEKTRO-HEIZSTÄBE ЭЛЕКТРИЧЕСКИЕ РАДИАТОРЫ, ЭЛЕКТРИЧЕСКИЕ ТЭНЫ
54-57		AKCESORIA DO GRZEJNIKÓW ACCESSORIES ACCESSOIRES АКСЕССУАРЫ
58-69		WYMIARY DIMENSIONS ABMESSUNGEN РАЗМЕРЫ
72-75		KOLORY, STRUKTURY, DETALE COLOURS, STRUCTURAL COLOURS, DETAILS FARBE, STRUKTURFARBEN, DETAILS ЦВЕТА, СТРУКТУРЫ, ПОДРОБНОСТИ





LIBRA SOFT
(LS)



DESIGN
Milner



MANGO
(MG)

HA



MANGO LIGHT
(MGL)

HA



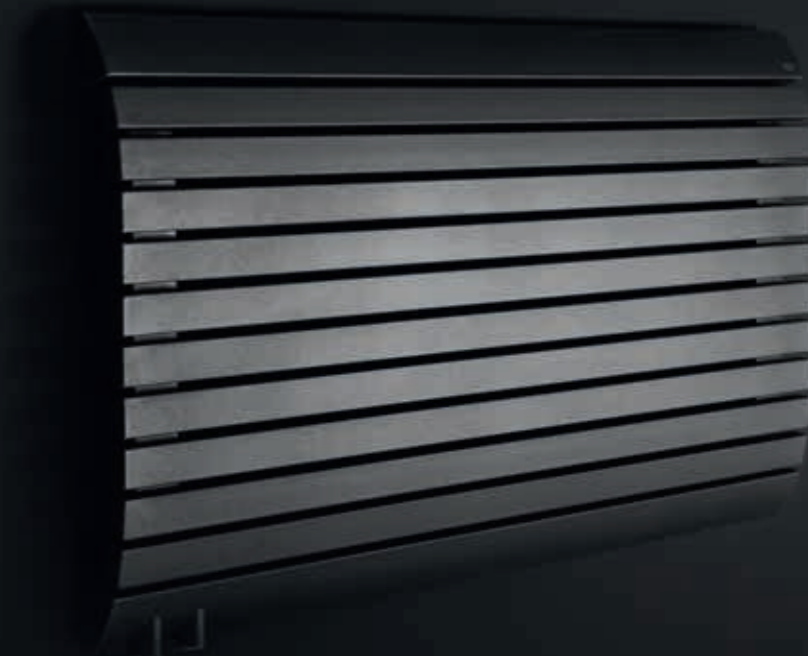
MEMFIS
(MS)

HCh



SANTOS
(ST)

HCh



MADERA
(MD)



SORENTO
(SR)









ENIX /AUDIO
VOLUME -24dB

Audio Effects Video Modes Settings Modes Back Exit OK Source List

harman/kardon

Phones



Set up
MIC



LIBRA AUDIO
(LA)





CAPRI
(C)



ROYAL
(R)



RAMA
(RM)



HIACYNT
(H)



QUATRO
(Q)



QUATRO
(QB)



LAMELIS
(LM)



FOCUS
(FXB)



FOCUS
(F)



FOCUS
(FX)

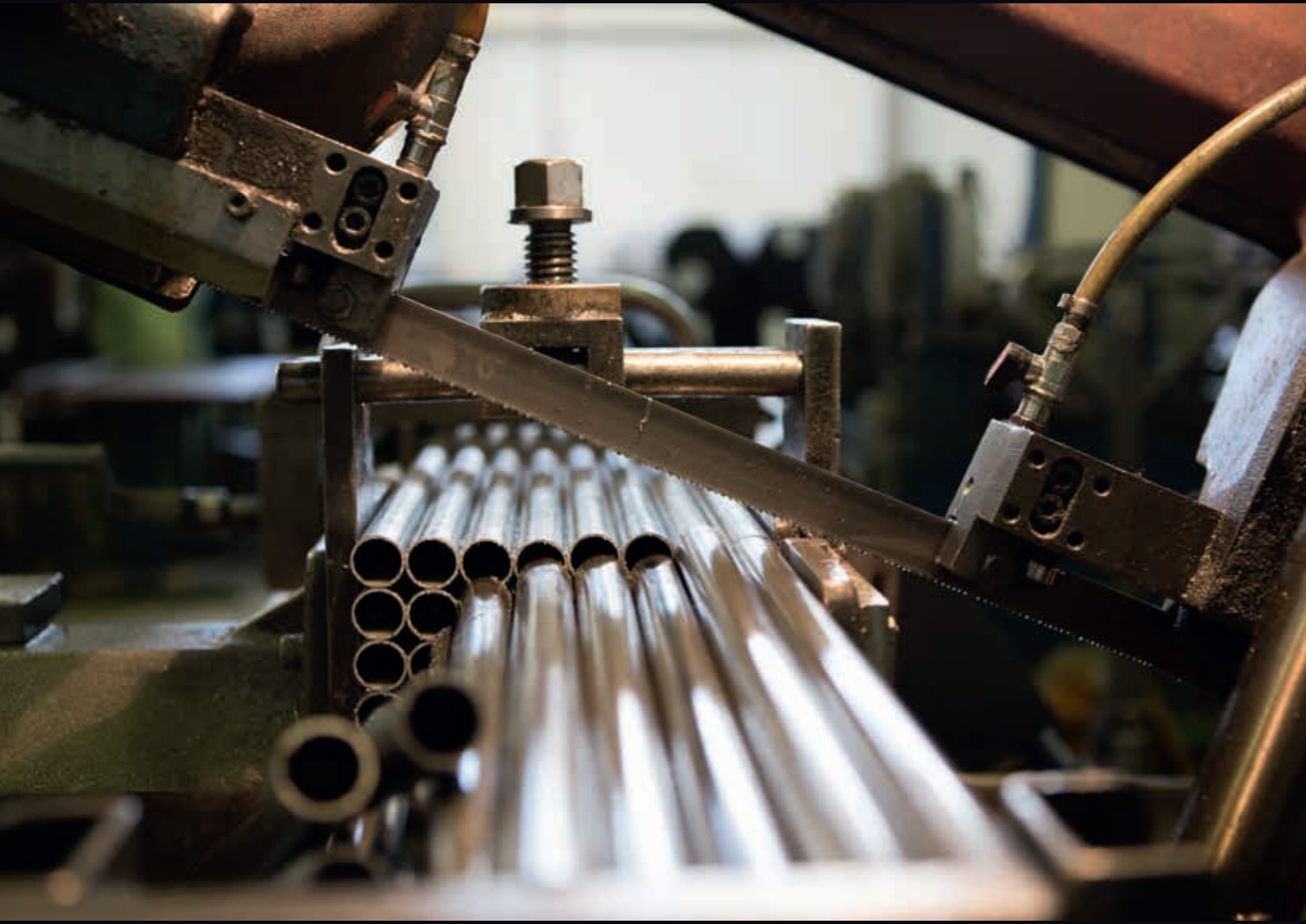


-  L-CH
Chrome
-  L-IN
Inox
-  L-WE
Wenge
-  L-WI
Cherry
-  L-OR
Walnut
-  L-KL
Maple

TREND
(TD)



TANGO
(TGX)



Ch

Ch
40

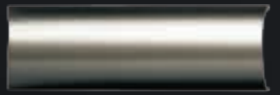


RAMA CHROM
(RMXCh)

Ch
41



UNO CHROM
(UXCh)



L-IN
Inox



L-WE
Wenge



L-WI
Cherry



L-OR
Walnut



L-KL
Maple



TREND CHROM
(TDCh)



FOCUS CHROM
(FCh)

Ch
44

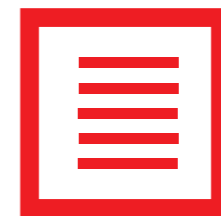


DALIS CHROM
(DCh)

Ch
45



PINI CHROM
(PCh)





IRYS
(I)



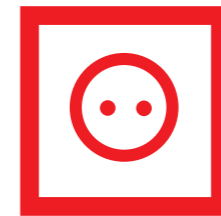
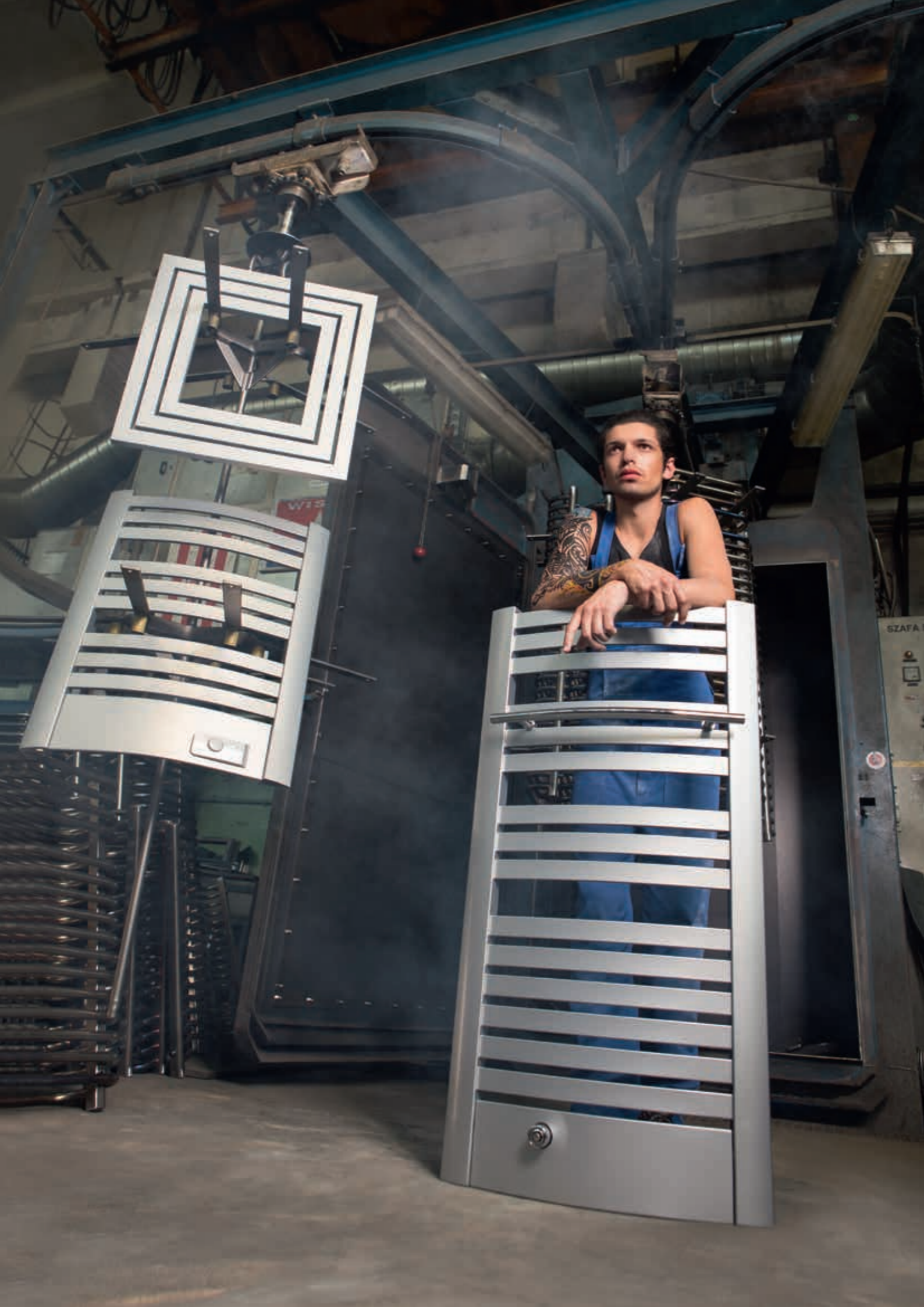
ASTER
(A)



PINI
(P)

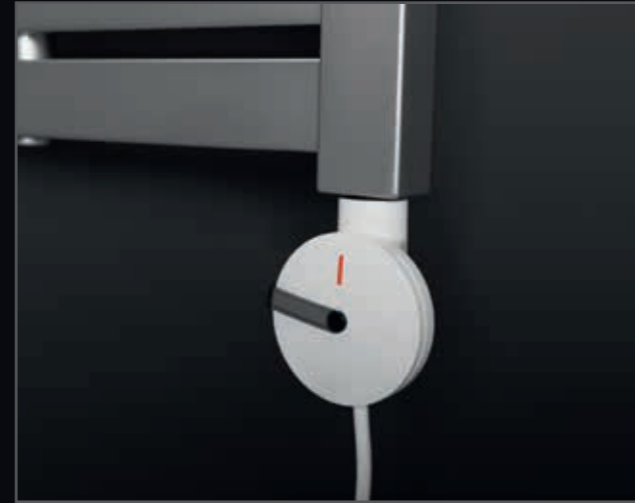


DALIS
(D)





QUATRO ELECT.
(EQB)



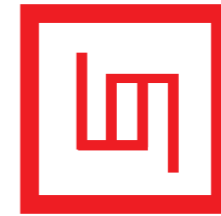
(GV)
WHITE



(GV)
SILVER



(GVCh)
CHROME

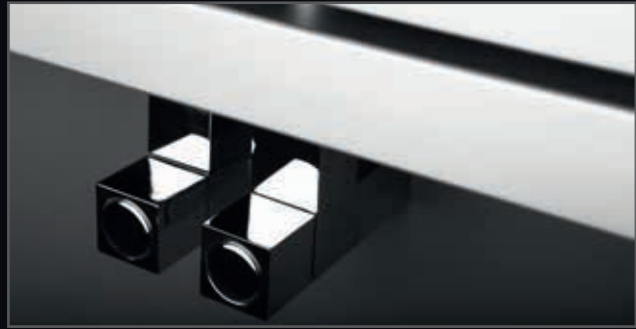




Heimeier MULTILUX-4



Carlo Poletti CYLINDER



Carlo Poletti CUBE



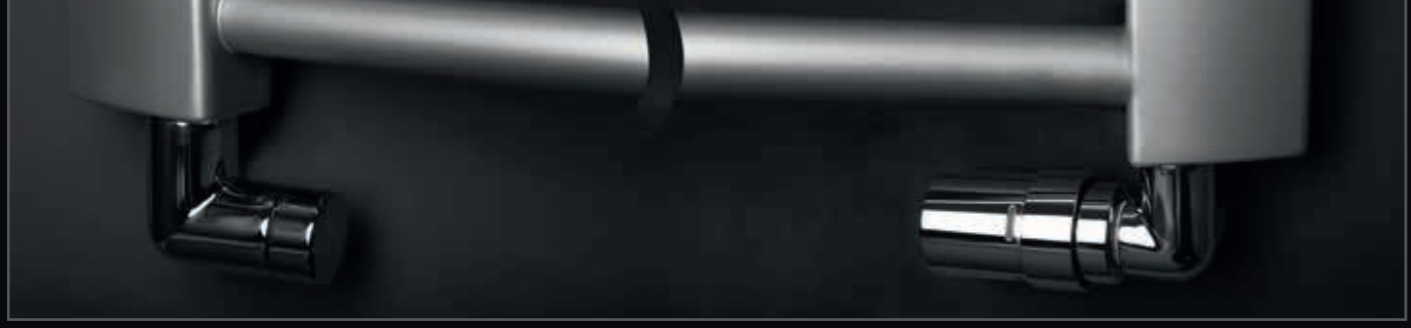
Danfoss VHX-M



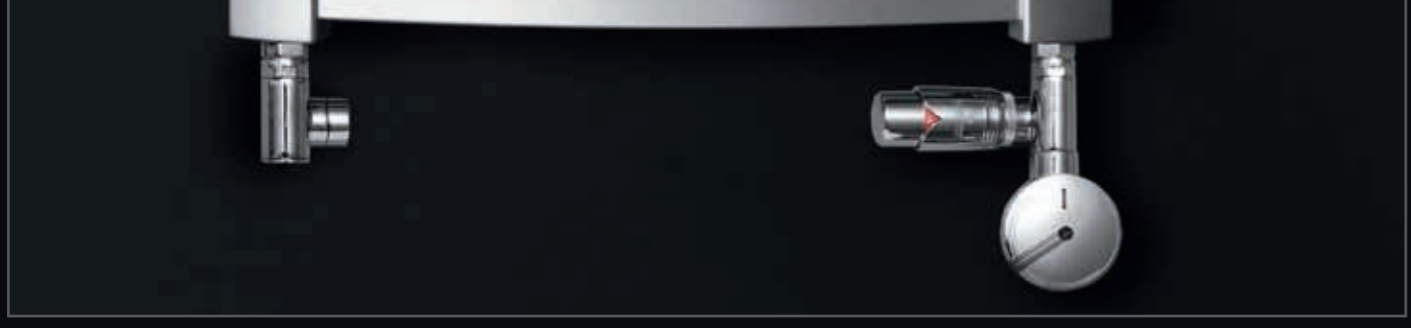
Oventrop MULTIBLOCK-T/UNI SH



Schlosser DOUPLEX right



Danfoss X-TRA COLLECTION



Schlosser TEE VALVE SET (zestaw trójnikowy)



HA



HQCh



HDCh



HPCh



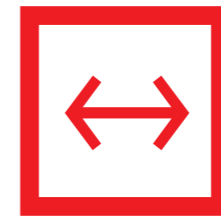
HHCh



HSCh



HKCh





MANGO (MG)

D	mm	mm	mm	mm	[W]	
					75/65/20°C	75/65/24°C
MG-316	340	1600	88	50	807	726
MG-318	340	1800	88	50	904	812
MG-320	340	2000	88	50	1000	898



MANGO LIGHT (MGL)

D	mm	mm	mm	mm	[W]		[h]	[V]
					75/65/20°C	75/65/24°C		
MGL-01	340	1600	88	50	807	726	15°	~220 V



SANTOS (ST)

D	mm	mm	mm	mm	[W]		[h]	[V]
					75/65/20°C	75/65/24°C		
ST-418	376	1800	76	50	734	659		
ST-420*	376	2000	76	50	813	729		
ST-518*	472	1800	76	50	921	829		
ST-520*	472	2000	76	50	1021	918		
ST-618*	568	1800	76	50	1111	999		
ST-620*	568	2000	76	50	1230	1106		

KTL



MADERA (MD)

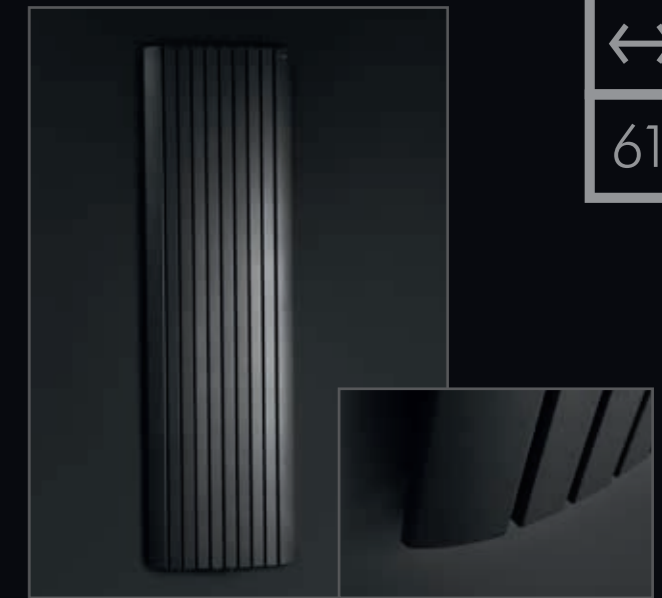
D	mm	mm	mm	mm	[W]	
					75/65/20°C	75/65/24°C
MD-0605*	600	471	90	50	297	268
MD-0606*	600	615	90	50	379	341
MD-1005*	1000	471	90	50	496	447
MD-1006	1000	615	90	50	631	569
MD-1405*	1400	471	90	50	694	625
MD-1406	1400	615	90	50	883	796
MD-1805*	1800	471	90	50	892	804
MD-1806*	1800	615	90	50	1136	1024
MD-2205*	2200	471	90	50	1091	983
MD-2206*	2200	615	90	50	1388	1251

KTL



ELIT (E)

D	mm	mm	mm	mm	[W]	
					75/65/20°C	75/65/24°C
E-611P	575	1070	92-97	50	530	476
E-611L	575	1070	92-97	50	530	476
E-614P	575	1364	92-97	50	662	595
E-614L	575	1364	92-97	50	662	595
E-617P	575	1658	92-97	50	791	711
E-617L	575	1658	92-97	50	791	711



MEMFIS (MS)

D	mm	mm	mm	mm	[W]	
					75/65/20°C	75/65/24°C
MS-418	420	1800	85	50	833	747
MS-420*	420	2000	85	50	923	827
MS-518*	516	1800	85	50	1037	930
MS-520*	516	2000	85	50	1149	1029
MS-618*	615	1800	85	50	1239	1111
MS-620*	615	2000	85	50	1372	1228

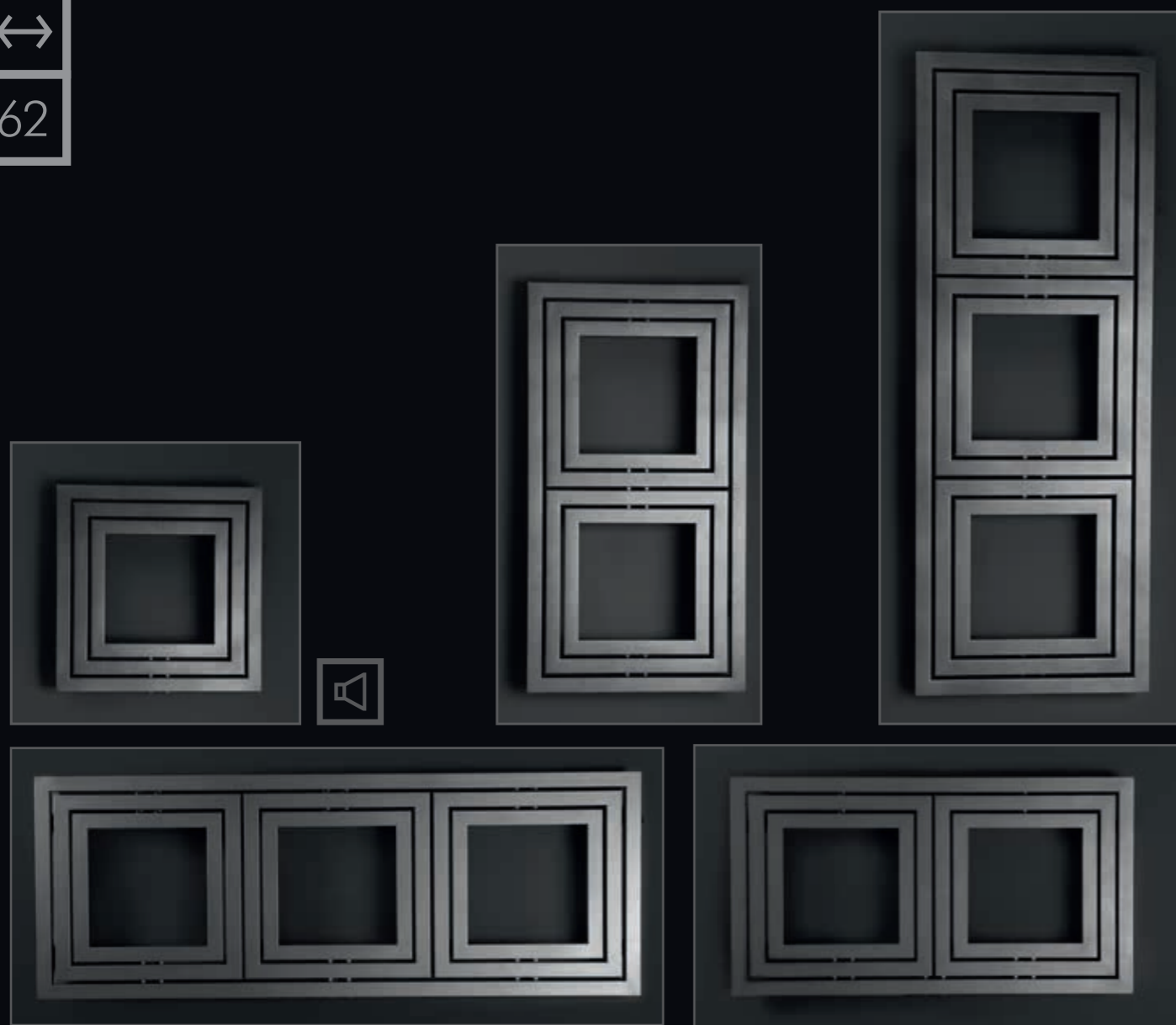
KTL



BOSTON (B)

D	mm	mm	mm	mm	[W]	
					75/65/20°C	75/65/24°C
B-609	555	904	65-70	50	302	272
B-611	555	1120	65-70	50	364	328
B-613	555	1336	65-70	50	426	383

KTL



LIBRA (L)

	mm	mm	mm	mm	[W] 75/65/20°C	[W] 75/65/24°C
L-606	600	600	90-95	50	428	386
L-611	600	1110	90-95	50	694	625
L-616	600	1620	90-95	50	909	818
L-1106	1110	600	90-95	50	731	658
L-1606	1620	600	90-95	50	1037	933

KTL



LIBRA AUDIO (LA)

	Bandwidth	Sensitivity	Power	Impedance
LA-606	[65Hz-25kHz]	[85 dB]	[40W]	[8 Ω]



LIBRA SOFT (LS)

	mm	mm	mm	mm	[W] 75/65/20°C	[W] 75/65/24°C
LS-707	650	650	97	50	466	419



LAMELIS (LM, LMX)

	mm	mm	mm	mm	[W] 75/65/20°C	[W] 75/65/24°C
LM-508	544	773	100-105	495	339	306
LMX-508*	544	773	100-105	50	339	306
LM-510	544	1043	100-105	495	483	435
LMX-510*	544	1043	100-105	50	483	435
LM-513	544	1313	100-105	495	620	559
LMX-513*	544	1313	100-105	50	620	559



RAMA (RM)

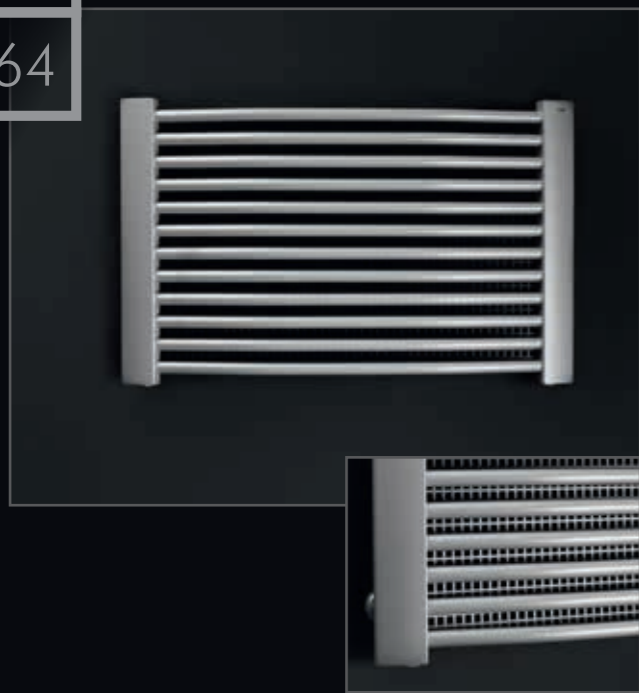
	mm	mm	mm	mm	[W] 75/65/20°C	[W] 75/65/24°C
RM-609	595	944	72-77	50	479	432



CAPRI (C)

	mm	mm	mm	mm	[W] 75/65/20°C	[W] 75/65/24°C
C-817	734	1744	125-130	50	1263	1134

↔
64



ROYAL (R)

	mm	mm	mm	mm	[w] 75/65/20°C	[w] 75/65/24°C
R-0805	844	524	125-130	748	454	409
R-1305	1294	524	125-130	1198	661	595
R-1705	1744	524	125-130	1648	855	769



QUATRO (Q, QX)

	mm	mm	mm	mm	[w] 75/65/20°C	[w] 75/65/24°C
Q-608	595	812	101-106	500	392	354
QX-608*	595	812	101-106	50	392	354
Q-611	595	1097	101-106	500	553	498
QX-611*	595	1097	101-106	50	553	498
Q-616	595	1667	101-106	500	849	765
QX-616*	595	1667	101-106	50	849	765



FOCUS (F)

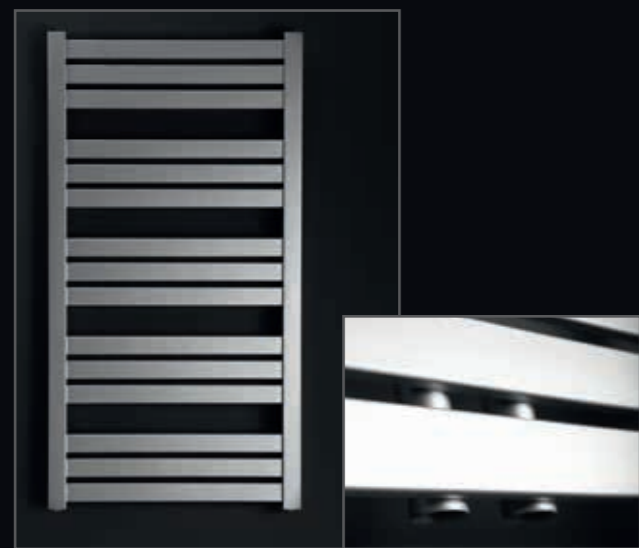
	mm	mm	mm	mm	[w] 75/65/20°C	[w] 75/65/24°C
F-509	502	818	97-102	406	410	369
F-513	502	1238	97-102	406	631	568
F-517	502	1742	97-102	406	905	813
F-609	595	818	106-111	500	470	423
F-613	595	1238	106-111	500	726	654
F-617	595	1742	106-111	500	1032	928
F-809	746	818	120-125	650	561	505
F-813	746	1238	120-125	650	866	778
F-817	746	1742	120-125	650	1250	1123

↔
65



FOCUS (FX)

	mm	mm	mm	mm	[w] 75/65/20°C	[w] 75/65/24°C
FX-609	595	818	106-111	50	470	423
FX-613	595	1238	106-111	50	726	654
FX-617	595	1742	106-111	50	1032	928
FX-809*	746	818	120-125	50	561	505
FX-813*	746	1238	120-125	50	866	778
FX-817*	746	1742	120-125	50	1250	1123



HIACYNT (H, HX)

	mm	mm	mm	mm	[w] 75/65/20°C	[w] 75/65/24°C
H-608	555	773	60-65	515	348	314
HX-608*	555	773	83-88	50	348	314
H-610	555	1043	60-65	515	495	446
HX-610*	555	1043	83-88	50	495	446
H-616	555	1583	60-65	515	763	688
HX-616*	555	1583	83-88	50	763	688



QUATRO (QB)

	mm	mm	mm	mm	[w] 75/65/20°C	[w] 75/65/24°C
QB-608	595	785	101-106	50	374	337
QB-612	595	1185	101-106	50	586	528
QB-617	595	1698	101-106	50	849	765



TANGO (TGX)

	mm	mm	mm	mm	[w] 75/65/20°C	[w] 75/65/24°C
TGX-608	606	818	66-71	50	445	403
TGX-612	606	1238	66-71	50	697	630
TGX-617	606	1742	66-71	50	1003	906



FOCUS (FXB)

	mm	mm	mm	mm	[w] 75/65/20°C	[w] 75/65/24°C
FXB-608	595	776	106-111	50	440	397
FXB-612	595	1154	106-111	50	669	602
FXB-617	595	1742	106-111	50	1031	927
FXB-808*	746	776	120-125	50	519	467
FXB-812*	746	1154	120-125	50	791	711
FXB-817*	746	1742	120-125	50	1243	1116

↔
66



TREND (TD)

	mm	mm	mm	mm	[W] 75/65/20°C	[W] 75/65/24°C
TD-508	504	776	100-105	465	342	309
TD-512	504	1154	100-105	465	498	450
TD-517	504	1742	100-105	465	770	695
TD-608	600	776	110-115	563	408	369
TD-612	600	1154	110-115	563	593	536
TD-617	600	1742	110-115	563	917	828
TD-808	755	776	124-129	716	513	464
TD-812	755	1154	124-129	716	746	675
TD-817	755	1742	124-129	716	1153	1042



RAMA CHROM (RMXCh)

	mm	mm	mm	mm	[W] 75/65/20°C	[W] 75/65/24°C
RMXCh-609	595	944	72-77	50	278	250



TREND (TDCh)

	mm	mm	mm	mm	[W] 75/65/20°C	[W] 75/65/24°C
TDCh-608	600	776	108-128	563	237	214
TDCh-612	600	1154	108-128	563	344	311
TDCh-617	600	1742	108-128	563	532	480



FOCUS CHROM (FCh)

	mm	mm	mm	mm	[W] 75/65/20°C	[W] 75/65/24°C
FCh-609	595	818	106-126	500	273	246
FCh-613	595	1238	106-126	500	421	379
FCh-617	595	1742	106-126	500	599	539



UNO CHROM (UXCh)

	mm	mm	mm	mm	[W] 75/65/20°C	[W] 75/65/24°C
UXCh-509	500	944	83-88	50	179	162



DALIS CHROM (DCh)

	mm	mm	mm	mm	[W] 75/65/20°C	[W] 75/65/24°C
DCh-408	450	776	92-112	400	209	188
DCh-412	450	1154	92-112	400	308	277
DCh-417	450	1742	92-112	400	470	422
DCh-608	600	776	104-124	550	270	243
DCh-612	600	1154	104-124	550	398	358
DCh-617	600	1742	104-124	550	609	547



PINI CHROM (PCh)

	mm	mm	mm	mm	[W] 75/65/20°C	[W] 75/65/24°C
PCh-408	458	776	78-98	408	209	188
PCh-412	458	1154	78-98	408	308	277
PCh-417	458	1742	78-98	408	470	422
PCh-608	608	776	78-98	558	270	243
PCh-612	608	1154	78-98	558	398	358
PCh-617	608	1742	78-98	558	609	547

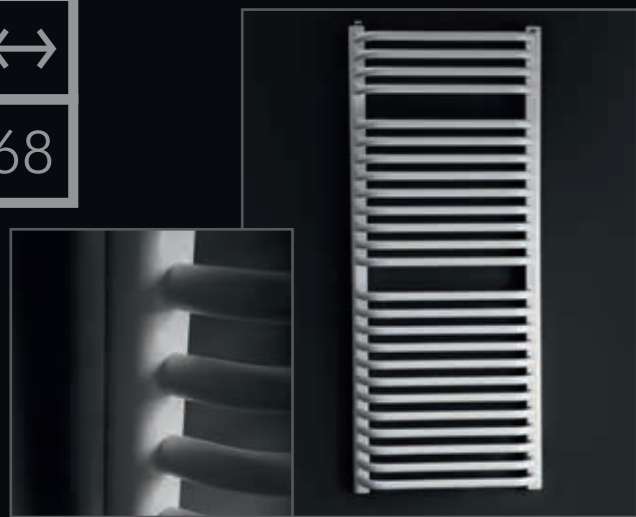


PINI CHROM (PXCh)

	mm	mm	mm	mm	[W] 75/65/20°C	[W] 75/65/24°C
PXCh-408	458	776	78-98	50	209	188
PXCh-412	458	1154	78-98	50	308	277
PXCh-608	608	776	78-98	50	270	243
PXCh-612	608	1154	78-98	50	398	358

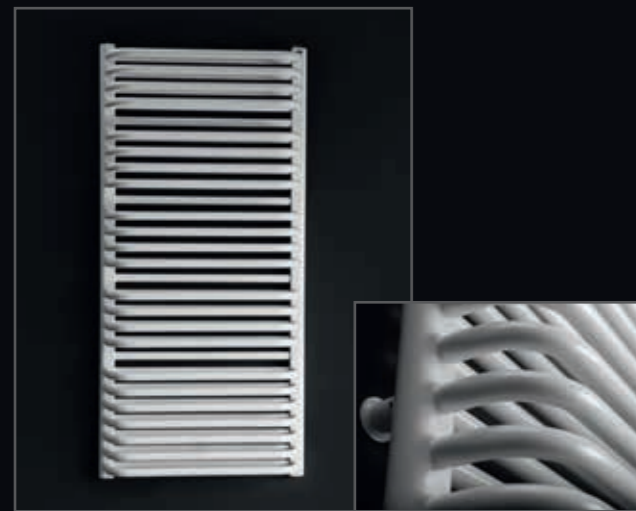
↔
67

↔
68



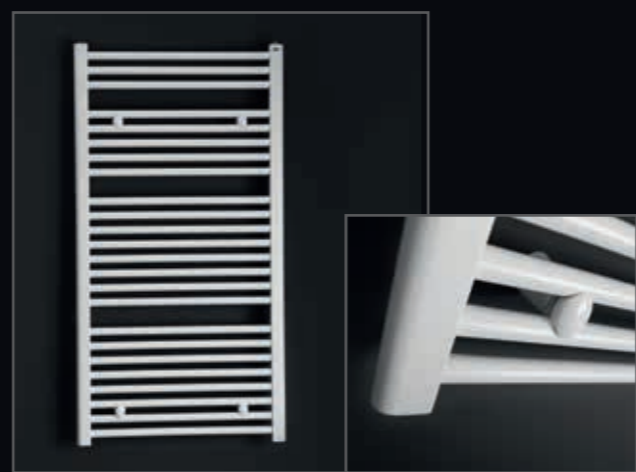
ASTER (A)

	mm	mm	mm	mm	[W] 75/65/20°C	[W] 75/65/24°C
A-308	300	776	157	250	320	289
A-312	300	1216	157	250	496	448
A-408	400	776	157	350	391	348
A-412	400	1216	157	350	608	535
A-504	500	380	157	450	233	210
A-510*	500	996	157	450	583	525
A-508	500	776	157	450	461	409
A-512	500	1216	157	450	718	630
A-515*	500	1524	157	450	900	810
A-517	500	1744	152	450	1027	903
A-604	600	380	157	550	268	240
A-608	600	776	157	550	531	468
A-610*	600	996	157	550	662	596
A-612	600	1216	157	550	829	721
A-615*	600	1524	157	550	1022	918
A-617	600	1744	152	550	1190	1032



IRYS (I)

	mm	mm	mm	mm	[W] 75/65/20°C	[W] 75/65/24°C
I-608	550	776	152	500	769	693
I-612	550	1154	152	500	1129	1019



PINI (P)

	mm	mm	mm	mm	[W] 75/65/20°C	[W] 75/65/24°C
P-308	340	776	78-98	290	274	247
P-312	340	1154	78-98	290	406	365
P-408	458	776	78-98	408	359	323
P-412	458	1154	78-98	408	527	474
P-417	458	1742	78-98	408	828	744
P-608	608	776	78-98	558	456	411
P-612	608	1154	78-98	558	669	602
P-617	608	1742	78-98	558	1051	944
P-808*	764	776	78-98	714	552	497
P-812*	764	1154	78-98	714	811	730
P-817*	764	1742	78-98	714	1274	1144



DALIS (D)

	mm	mm	mm	mm	[W] 75/65/20°C	[W] 75/65/24°C
D-408	450	776	92-112	400	360	324
D-412	450	1154	92-112	400	531	478
D-417	450	1742	92-112	400	811	728
D-608	600	776	104-124	550	466	420
D-612	600	1154	104-124	550	687	618
D-617	600	1742	104-124	550	1050	943
D-808*	750	776	120-140	700	570	513
D-812*	750	1154	120-140	700	839	755
D-817*	750	1742	120-140	700	1282	1151



QUATRO ELECTRIC (EQB)

	mm	mm	mm	[W]	[V]
EQB-608	595	786	101-106	300	230V, 50Hz
EQB-612	595	1185	101-106	600	230V, 50Hz
EQB-617	595	1698	101-106	900	230V, 50Hz

IP44



↔
69

HEATER

	[W]	[V]
GV-300	300	230V, 50Hz
GV-600	600	230V, 50Hz
GV-900	900	230V, 50Hz

IP55

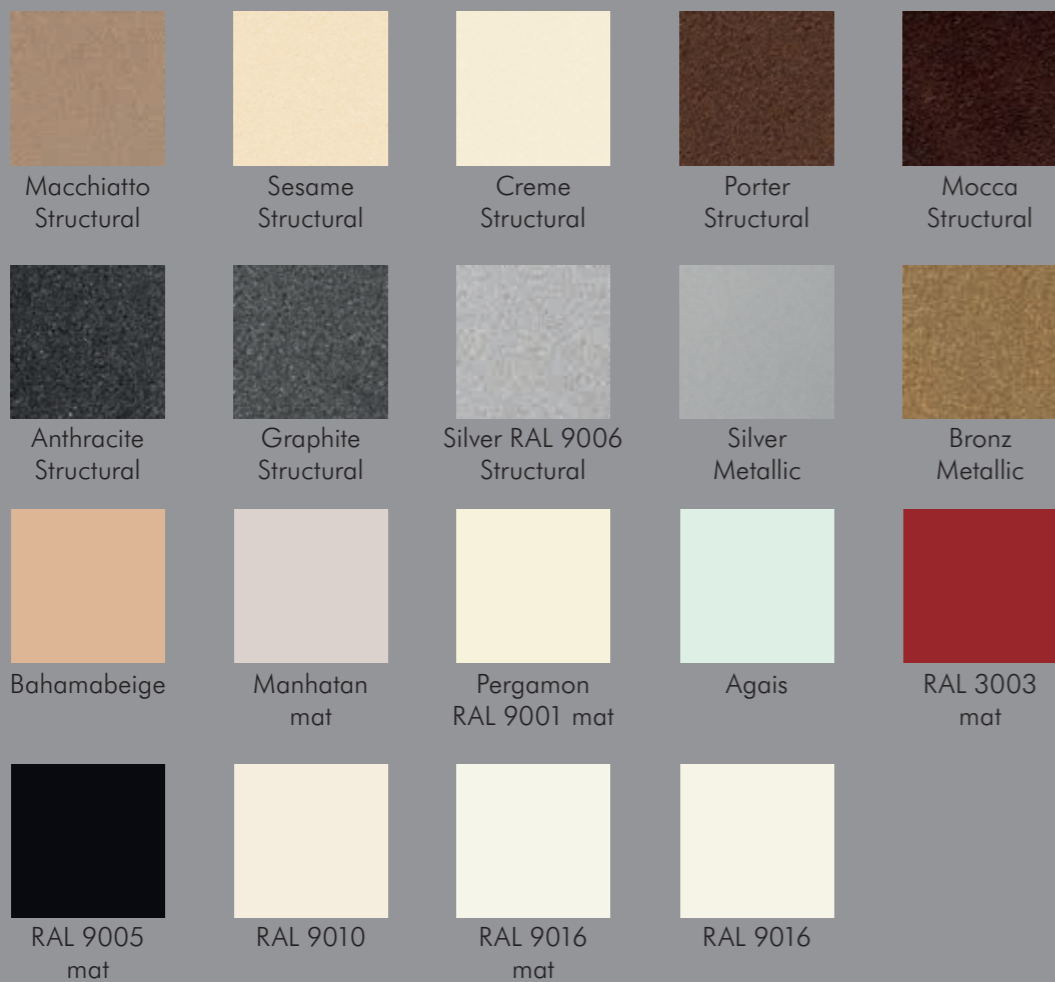
Legend:

KTL - kataphorese
* Available on request

	mm	mm	mm	mm	[W]	[IP]	[V]
Typ	Szerokość [mm]	Wysokość [mm]	Głębokość [mm]	Rozstaw przyłączy [mm]	Moc [W]	Klasa ochronności IP	Napięcie [V]
Type	Width	Height	Depth	Connections spacing	Power	Protection class	Voltage
Typ	Breite	Höhe	Tiefe	Anschlussabstand	Leistung	Schutzklasse	Netzspannung
Тип	Ширина	Высота	Глубина	Ширина подсоединения	Мощность	Класс защиты	Вольтаж





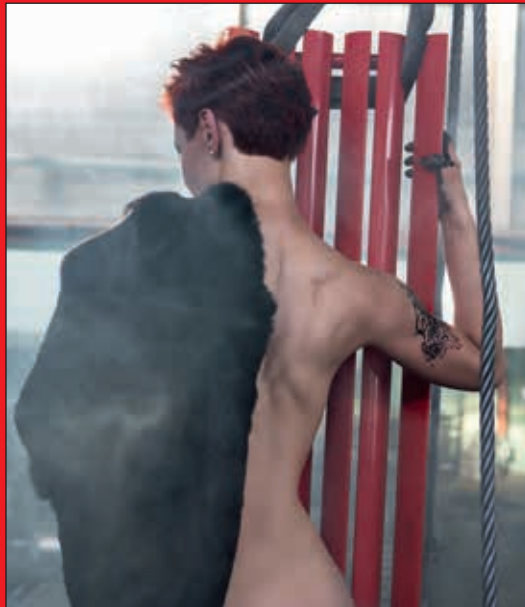


Zaprezentowane kolory z powodów techniczno-drukarskich mogą nieznacznie odbiegać od kolorów oryginalnych.
 The colours shown here may slightly differ from actual colours due to technical and printing reasons.
 Die abgebildete farben können aus drucktechnischen grunden gering vom originalfarben abweichend sein.
 Представленные цвета по техническим причинам могут незначительно отличаться от оригинальных цветов.

RAL

1000	2000	3000	4001	5000	6000	7000	8000	9002
1001	2001	3001	4002	5001	6001	7001	8001	9003
1002	2002	3002	4003	5002	6002	7002	8002	9004
1003	2003	3004	4004	5003	6003	7003	8003	9011
1004	2004	3005	4005	5004	6004	7004	8004	9017
1005	2008	3007	4006	5005	6005	7005	8007	9018
1006	2009	3009	4007	5007	6006	7006	8008	
1007	2010	3011	4008	5008	6007	7008	8011	
1011	2011	3012	4009	5009	6008	7009	8012	
1012	2012	3013	4010	5010	6009	7010	8014	
1013		3014		5011	6010	7011	8015	
1014		3015		5012	6011	7012	8016	
1015		3016		5013	6012	7013	8017	
1016		3017		5014	6013	7015	8019	
1017		3018		5015	6014	7016	8022	
1018		3020		5017	6015	7021	8023	
1019		3022		5018	6016	7022	8024	
1020		3027		5019	6017	7023	8025	
1021		3031		5020	6018	7024	8027	
1023				5021	6019	7026	8028	
1024				5022	6020	7030		
1027				5023	6021	7031		
1028				5024	6022	7032		
1032					6024	7033		
1033					6025	7034		
1034					6026	7035		
1037					6027	7036		
					6028	7037		
					6029	7038		
					6032	7039		
					6033	7040		
					6034	7042		
						7043		
						7044		
						7045		
						7046		
						7047		







www.enix.pl